

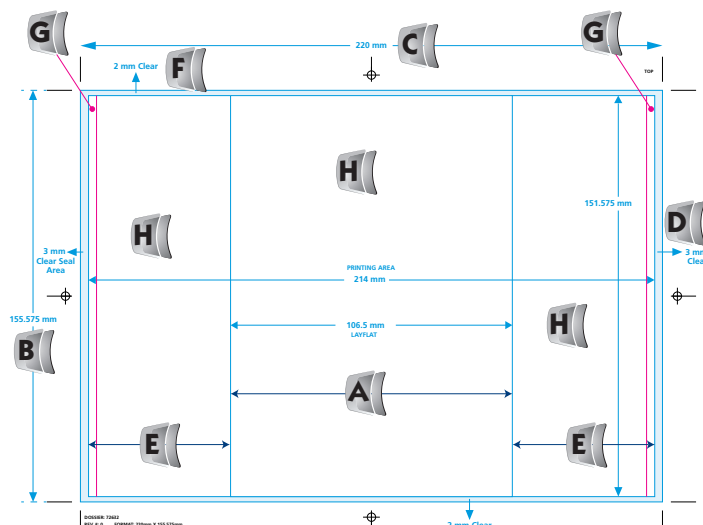
Illustrator Dieline

The dieline is custom-sized to your product and will serve as the design template for your project. A sample container is required in order for IMS to produce a custom dieline. Your sales rep. can instruct you on submitting your container to IMS.

How to use the Dieline

The dieline is provided as an Illustrator or PDF that you can open in the software and use on a separate layer. The dieline is always provided at 100% of actual size and **must not be reduced or enlarged**. The dieline contains the following information:

- A Layflat Size:** The finished width of your sleeve after it is seamed. The vertical lines of the layflat are where the sleeve will be folded when the unseamed flat film is seamed. These folds can be moved horizontally across the sleeve, but must remain at least 15mm from the seam.
- B Cut Length:** The height of your label. Includes a 2mm clear area at top and bottom.
- C Web width:** The flat, unseamed size of the film.
- D Seam Overlap:** Area that will be covered by the overlapping film from the opposite side of the sleeve. This area **must NOT** include background image or any copy.
- E Fold Location:** The Layflat folds can be moved either left or right to accommodate your design, but must not be less than 15mm from the seam edge (left or right sides).
- F Clear Area:** For the sleeves to be individually cut, there must be a clear area between each sleeve on the roll. The 2mm clear area at the top and bottom will add-up to allow the sleeves to be cut accurately.
- G Clear Text Area:** This area (2mm) must be free of text, but the rest of the design must fill the **Printing Area**.
- H Printing Area:** This area (shown in white) is the main area for your artwork. Avoid placing important copy within 3mm of the seams and clear areas. Background image should extend to the printing area limit. Avoid placing barcodes and important copy on the layflat folds. No bleed is required - artwork should be aligned to the dieline lines and not extend past them.
- I Project Specs:** Area used for listing the project specifications.
- J Ink Swatches:** All ink colors must be represented with a swatch. Remember that all Pantone spot colors, process colors, metallic inks, varnishes and adhesives should be included and well indicated, as well as opaque white ink(s) (needed as a backing for the colors to be opaque).
- K Proof Approval:** Area used for your final approval of the proof provided by IMS prior to your sleeve being printed. A signed copy or the proof must be returned to IMS before plate making and printing can begin.



IMS
Identification Multi Solutions inc.

Use date de livraison vous sera confirmée par la signature de l'opérateur digital (après le 15/11/2016).
Delivery date will be confirmed after the digital operator's signature (after 11/11/2016).

Approuvé / Approved: _____
Approuvé avec changements / Approved with changes: _____
Veuillez modifier et renvoyer / Please modify and send another copy for approval: _____

Signature: _____ Date: _____

S.V.P. Veuillez apporter une attention particulière lors de la lecture de ce document. Notre responsabilité ne pourra se limiter qu'au format effectif.
Please read this document carefully. Our responsibility is limited only to the work we have performed.

DE CODE CLIENT : _____ # B2B 18-0000

Client/Order name: XXXXXX # Dossier/Case No: _____

Dimensions/Size: XXXmm x XXXmm # de couleurs/Colors: X

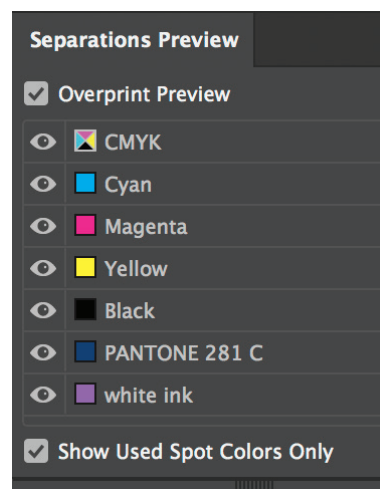
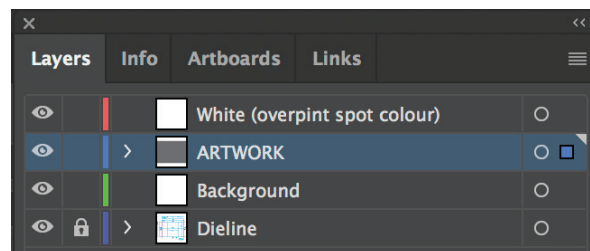
de lot/Lots: 1 % Épreuves / % Proof: 100 %

REV # : 0 Type de Plaque : 0

S.V.P. : Notice que l'épreuve ne donne pas les couleurs réelles. Utilisez le guide Pantone. Please note colors on proof are not exact. Use Pantone guide for matching colors.

Après l'approbation finale PDF envoyée, nous sommes l'opérateur qui nous envoie votre document à imprimer et il est important de répondre toutes vos demandes de modification rapidement. Une dieline imprimée PDF nous envoie les corrections à chaque demande de modification. Une dieline imprimée PDF nous envoie les corrections à chaque demande de modification. Une dieline imprimée PDF nous envoie les corrections à chaque demande de modification. Une dieline imprimée PDF nous envoie les corrections à chaque demande de modification.

After the final PDF proof sent, we accept making more modifications to the artwork if necessary. It is important to collect all your demands all at once and not only one request. After this time, a second PDF proof will be sent to you for approval but for each modification asked after this second proof an additional cost will be charged.



Use the Separation Preview panel to look at how each color will print.

Check "Show Used Spot Colors Only" to make sure no unwanted color end up printing.

We also suggest printing your file in separation mode for final verification.

PLATES / SPOT COLORS

You are limited to 9 plates. This includes CMYK Process Colors, Pantone Spot Colors, Metallic Inks, Opaque White and Surface Varnish. Use SWOP standards for process colors and Pantone (PMS) Solid Coated for spot colors. Show all used colors as swatches on the dieline. Use a contrasting SPOT color to show white ink coverage (the backing) on a separate layer. Clear areas should also be shown in a contrasting SPOT color on a separate layer and indicated in the project specification box.



DESIGN/LAYOUT APPLICATION SOFTWARE

Adobe Illustrator CS6 (.ai) is the preferred application for submitting your artwork. We also accept hi-res PDF files and Adobe InDesign files (exceptions apply). Adobe Photoshop is NOT an acceptable format for this type of document. It is, however excellent for editing photographic images that may be used on sleeves, but it should not be used for anything that contains type or vector graphics.

Files submitted in any format other than Adobe Illustrator (.ai) may incur additional charges. Please submit Illustrator files that include all text, all logos and all fonts used in the document. For our reference, please also submit a PDF proof of the artwork.



Document.ai



Proof.pdf



Document.indd



image.psd

PLACED IMAGES

Imported images need to have at least 300 dpi, in layered PhotoShop PSD when possible. Do not embed images. Supply images in a folder with the art files. Use Bitmap (1-bit), Grayscale (8-bit) or CMYK (8-bit) mode only (16-bit is not an acceptable format).

TYPE

Convert ALL type to curves (outline). If type changes are anticipated, please provide all font files with non-outlined text. Use Sanserif typefaces for small text.

POSITIVE TYPE

All positive type must be 4 points, (ideal is 6 or larger) in solid spot color ink (but 9 points or larger for CMYK process type). Avoid CMYK colour build type. Consider using Sanserif fonts for type smaller than 8 points. NO ULTRA LIGHT

ABCdef123

4 points minimum (ideal is 6 points or larger)
in a single spot color or black

REVERSED TYPE

All reversed type must be 6 points or larger and bold face or heavier. Type thinner than bold face must have a .15 or .25 pt stroke added. Reversed type smaller than 9 points can only be reversed from one color. No CMYK process type may be smaller than 9 points. Small reversed type (>6 pt.) can be reversed out of spot colors or spot colors can be used to outline the text.

reversed from:
Black (K only)

ABCdef123

6 pt. Bold or larger

reversed from:
Single Spot Color

ABCdef123

6 pt. Bold or larger

reversed from:
CMYK image with stroke

ABCdef123

6 pt. Bold or larger
with spot color outline
(0.5 pt outside stroke)

COLORS

Remove all extra colors from the Adobe Illustrator Color Palette. Use only CMYK color and/or Pantone Spot Colors. Be sure all spot colors are set as SPOT and not CMYK. Never use RGB colors.

BARCODES

UPC codes and barcodes should be rotated so that the bars of the code are horizontal on the sleeve. This will help eliminate scanning errors caused by distortion when the sleeve is shrunk to the container. Barcodes must be backed by opaque white and the bars must be black (K) or in a dark color. Barcodes can be reduced up to 80%, but a minimum of 0.625" for the line is required. If the barcode colour is not black, consult an IMS expert to validate its quality.

